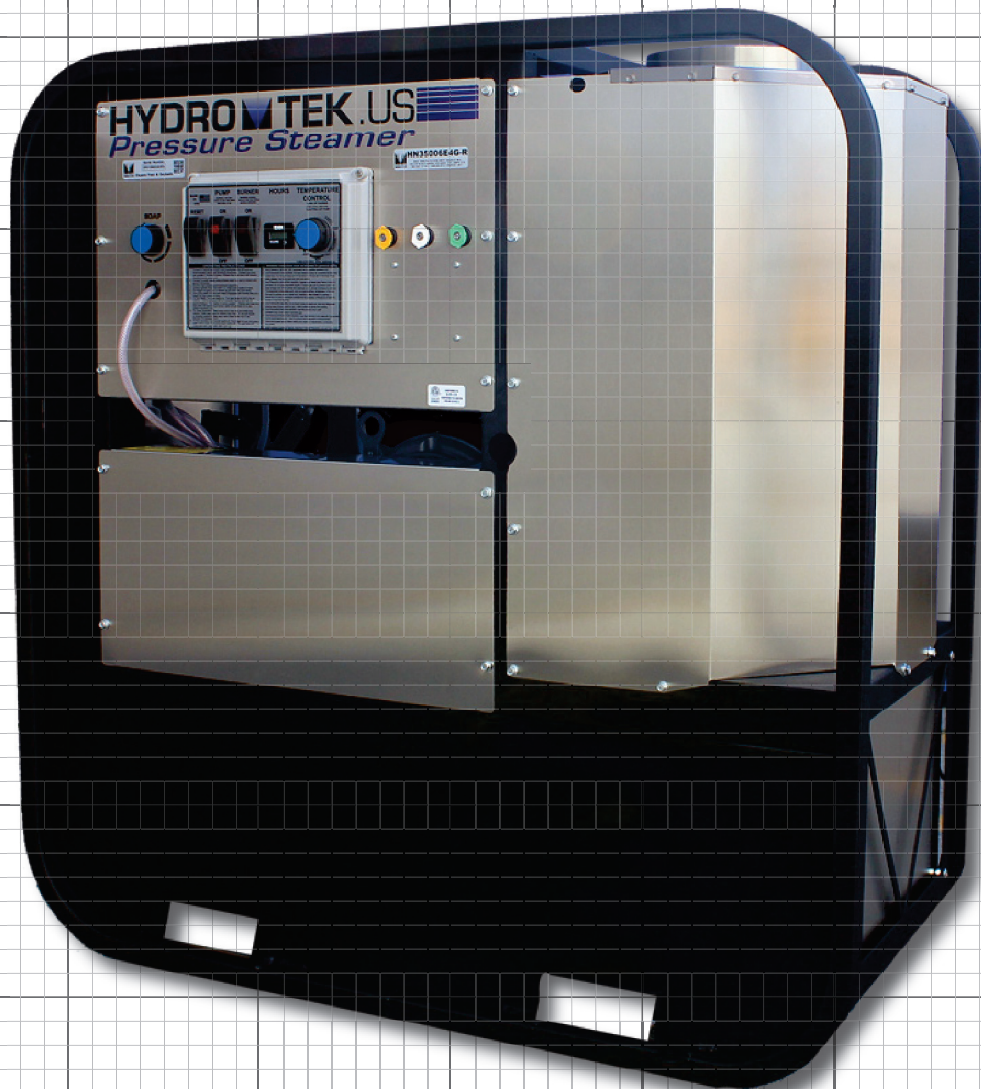
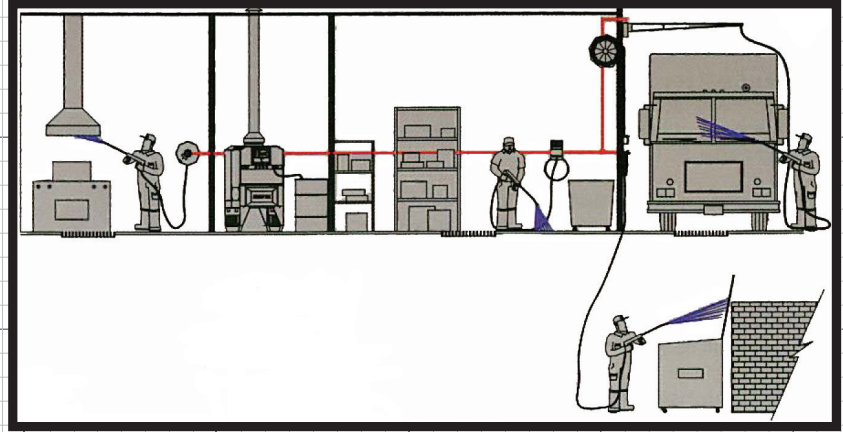
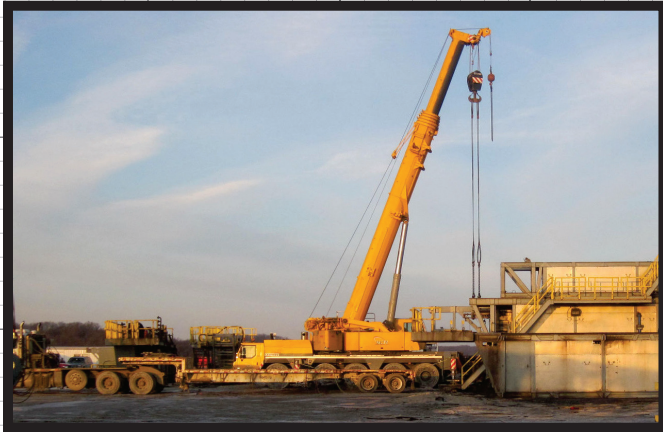


HN PRESSURE STEAMERS

HN SERIES: NATURAL GAS, L.P., OR OIL HEATED, ELECTRIC MOTOR



IN A WASH BAY, THE OTHERS JUST DON'T MEASURE UP

HYDRO TEK

PRESSURE STEAMER

HOT/COLD/STEAM - NATURAL GAS, L.P. or OIL HEATED, ELECTRIC

HN
SERIES

STATIONARY MOUNTED

■ Ready to Work when you are:

No need to fill fuel tanks or hunt down a water supply when machine is directly plumbed into natural gas and water lines. The pressure washer can be housed indoors, away from the elements, while installing wash stations remotely outdoors.

■ Clean and Efficient Heating System:

24v automatic, electronic ignition on low emission natural gas burner. Liquid Propane conversion option or diesel heated option is available on any model.

■ SpiraLast™ Coil:

The coil is a Hydro Tek manufactured SpiraLast™ heating coil. Robotically fused ½" schedule 80 steel pipe is cold rolled to protect the steel pipe from fatigue and the spiral coil is then surrounded by ceramic insulation and stainless enclosure with double-wall end caps. Ask your dealer about the Lifetime Coil Warranty.

■ Belt Driven pump:

Low RPM drive – cooler, quieter, continuous duty performance. These industrial triplex pumps feature ceramic plungers for long life. EZ Align™ pump rail system for belt tensioning with a simple adjustment bolt.

■ NEMA4 Water Tight Electrical Box:

ETL certified to UL1776 Class 2 for use in wash-down area, exceeds industry standards. Special Hydro Tek control box features easy to use controls and provides instant access to electronics. Standard diagnostic indicators ensure optimal system performance. **Dual voltage switch on most 230v models allows you to simply flip a switch to change to 208v power supply.**

■ Bypass Cool System:

Worry free pump cooling system prevents pump from overheating with system designed pump bypass feature.

■ Durable Frame Construction:

Welded, powder coated steel, pro-tect-it frame for durability with rustproof stainless coil wrap and front panels. Forklift slots and overhead lifting points to safely reposition machine. Frame integrated hold down tabs. Stainless steel frame option as well as an option for a removable, stainless back panel available.

■ Best in Class accessibility:

Easy-remove panels on an open frame design with open backside gives you full access to all components, including EZ Align™ belt tensioning system, electrical box, and burner igniter for efficient preventative maintenance checks.

■ More Standard Features:

- Detergent flow metering at full pressure ■
- Heavy duty industrial motor with standard thermal overload protection. ■
- Adjustable temperature up to 250°F with steam setting on most models ■
- Burst disc technology for operator safety.
- Rustproof float tank to regulate incoming water ensuring consistent system performance. ■
- Heavy duty hose, wand and trigger gun with quick connect nozzles
- Hose reel mounting area on frame allowing for convenient hose storage.
- Remote ready: Choose an on/off timer remote option or a full function remote option for complete control from the wash site



Specifications

Model	PSI	GPM	Temp.	HP	Voltage
HN20004E2G	2000	3.9	250° F	5	208/230v - 1ph
HN25004E2G	2500	3.8	250° F	6.5	230v - 1ph
HN25004E3G	2500	3.8	250° F	7.5	208/230v - 3ph
HN25004E4G	2500	3.8	250° F	7.5	460v - 3ph
HN30004E2C	3000	3.9	250° F	8	208/230v - 1ph
HN30004E2G	3000	3.9	250° F	8	208/230v - 1ph
HN35005E3C	3500	4.3	250° F	10	208/230v - 3ph
HN35005E3G	3500	4.3	250° F	10	208/230v - 3ph
HN35005E4C	3500	4.3	250° F	10	460v - 3ph
HN35005E4G	3500	4.3	250° F	10	460v - 3ph
HN35006E3G	3500	5.5	200° F	15	208/230v - 3ph
HN35006E4G	3500	5.5	200° F	15	460v - 3ph

Note: Any model can be ordered as liquid propane heated or diesel heated

Specifications may vary, consult factory for custom models

Dimensions: 47"l x 24.75"w x 48"h

Optional Accessories:

Machine mount hose reel, additional wash station remotes, draft diverter, full-feature wall mount remote, 30-min shut off timer, hour meter, downstream soap injection, stainless steel frame, stainless back panel kit

DISTRIBUTED BY:

HYDRO TEK
CLEANING EQUIPMENT MFG.

2353 Almond Ave. Redlands, CA 92374
phone 800.274.9376 or 1.909.799.9222
www.hydrotek.us fax 909.799.9888

HN Series 1/16 Hydro Tek ©

Lynco

Lynco Products Inc
#114, 1220 - 28 STREET N.E.
CALGARY, AB T2A 6A2
403-250-3600 / 1-877-249-3600
sales@lynco.pro / www.lynco.pro