

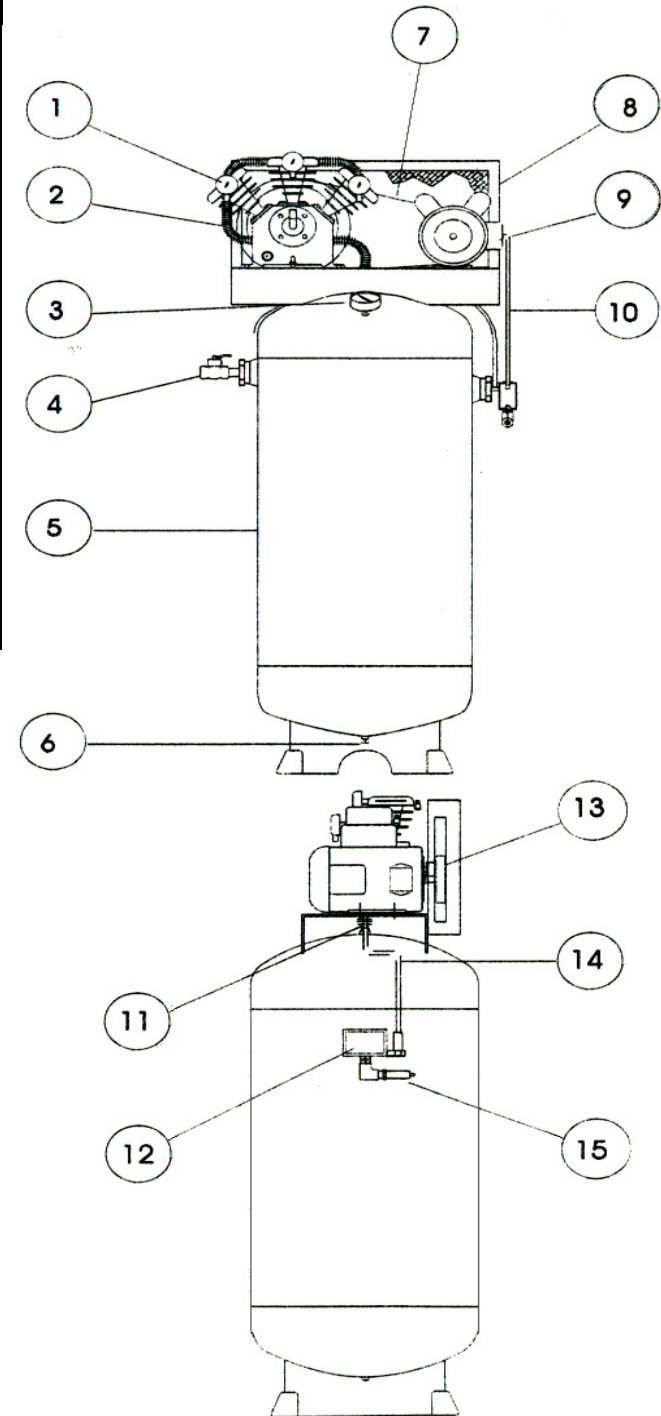
| Item | Description | C4160V1 | C5160V1 | C5(3/5)60V1 | C7*80V1 |
|------|---------------------------|------------------|------------------|------------------|-------------------|
| 1 | Compressor w/ Flywheel | PV02A | PT03A | PT03A | PV05A |
| 2 | Discharge Tube | TU-25-AL | TU-23-AL | TU-23-AL | TU-2634-1A |
| 3 | Pressure Gauge | PG200-2.5R | PG200-2.5R | PG200-2.5R | PG200-2.5R |
| 4 | Outlet Valve | BV1/2MF | BV1/2MF | BV1/2MF | BV3/4MF |
| 5 | Air Receiver | 60V20X48BR-B | 60V20X48BR-B | 60V20X48BR-B | 80VE20X63-B |
| 6 | Drain Cock | DC1/4 | DC1/4 | DC1/4 | DC1/4 |
| 7 | V-Belt | 4L530 | 4L530 | A48 | A73 (2) |
| 8 | Belt Guard | BGC | BGC | BGC | BG80GAL |
| 9 | Motor - 1 Phase, 208/230V | EM05.0-36-10SPL | EM05.0-36-10 | N/A | EM07.5-18-10 |
| | - 3 Phase, 208/230-460V | N/A | N/A | EM05.0-36-30 | EM07.5-18-30 |
| | - 3 Phase, 575V | N/A | N/A | EM05.0-36-50 | EM07.5-18-50 |
| 10 | Wiring Harness | 12/3-24-C4 | 12/3-24-C5 | N/A | N/A |
| 11 | Check Valve | CTF1/2X1/2 | CTF1/2X1/2 | CTF1/2X1/2 | P1010S-T |
| *12 | Pressure Switch | 21UCBDB | 3BEHD | 21UCBDB | 21UCBDB |
| 13 | Pulley - Motor | MA38X5/8 | MA38X7/8 | MA38X11/8 | 2MAL82 |
| | Hub or Bushing | N/A | N/A | N/A | LX13/8 |
| 14 | Unloader Tube w/ Fittings | TU1/4BLK & 68-4A | TU1/4BLK & 68-4A | TU1/4BLK & 68-4A | TU-1/4-CU & 68-4A |
| 15 | Safety Valve | PSV1/4-150 | PSV1/4-150 | PSV1/4-150 | PSV1/4-150 |
| | Eagle Compressor Oil | EAOIL10 | EAOIL10 | EAOIL10 | EAOIL10 |

* For C5360V1-CS2 (208-230V) substitute part #12 to CS-10/16A

* For C5360V1-CS4 or C5560V1-CS (460V or 575V) substitute part #12 to CS-6.3/10A

* For C7180V1-MS - add Magnetic Starter part # MS60981104 * For C7380V1-CS2 - substitute part #12 for CS-20/24A

* For C7380V1-CS4 - substitute part #12 for CS-10/16A * For C7580V1-CS - substitute part #12 for CS-6.3/10A



MODELS

| | |
|-------------|-------------|
| C4160V1 | C7180V1 |
| C5160V1 | C7180V1-MS |
| C5360V1 | C7380V1 |
| C5360V1-CS2 | C7380V1-CS2 |
| C5360V1-CS4 | C7380V1-CS4 |
| C5560V1 | C7580V1 |
| C5560V1-CS | C7580V1-CS |

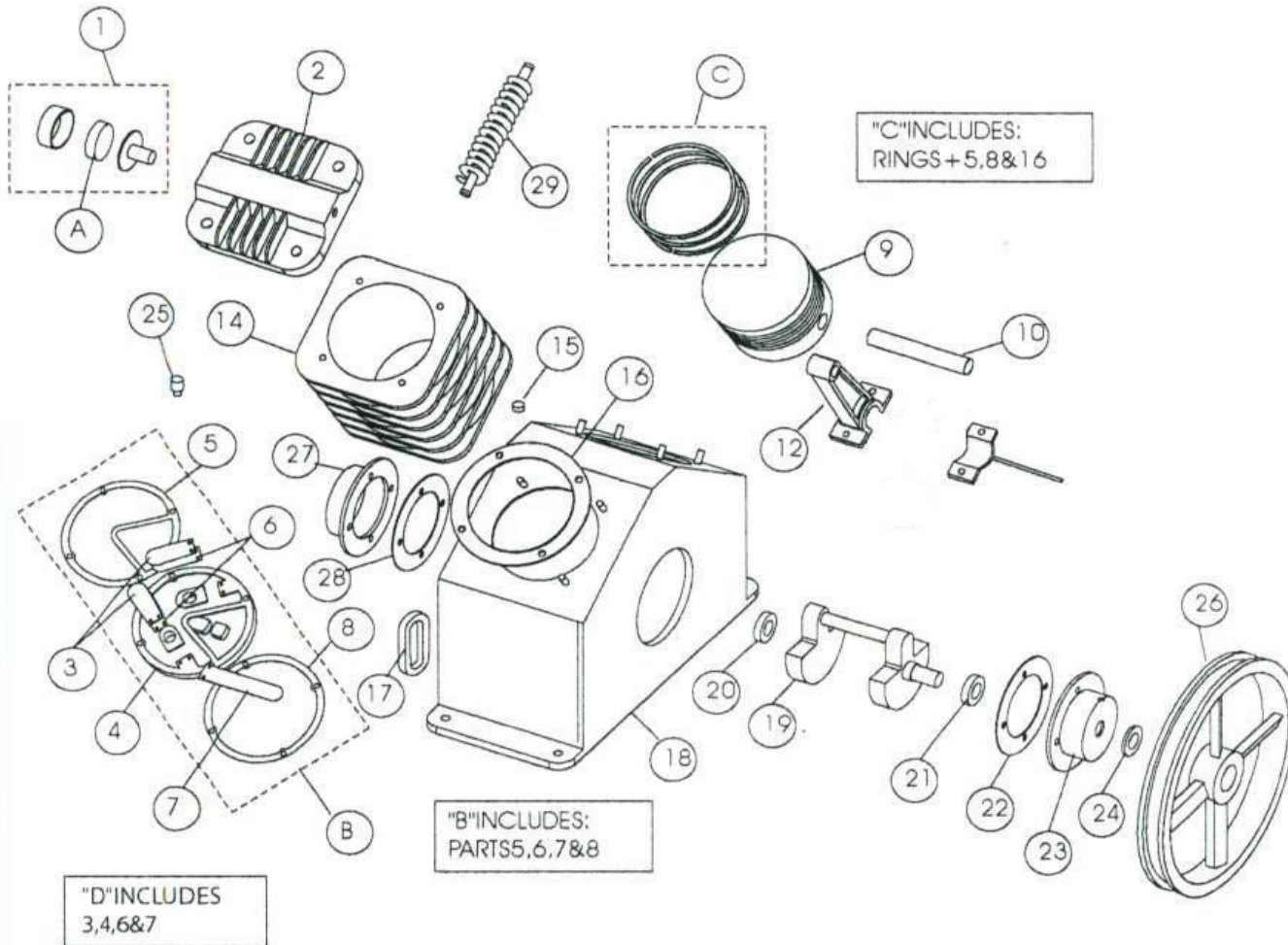
Supplied by:



#8, 3600 - 21 Street N.E
 Calgary, Alberta
 403-250-3600
 sales@lynco.com
 www.lynco.com

Eagle Air Compressor part breakdown sheet - PV02A

| Item | Description | Qty Req. | Part # |
|------|---|----------|--------------|
| 1 | intake filter ass'y | 2 | 51111-5600 |
| 2 | cylinder head | 2 | 52122-0101 |
| 3 | lift limiter - discharge valve plate | 4 | 51121-3102 |
| 4 | valve seat | 2 | 52122-2101 |
| 5 | valve seat to head gasket | 2 | 52122-2105 |
| 6 | discharge valve plate | 4 | 51121-2103 |
| 7 | intake valve plate | 2 | 52122-2103 |
| 8 | valve seat to cylinder gasket | 2 | 52122-2104 |
| 9 | piston | 2 | 51122-5101 |
| 10 | piston pin c/w snap rings | 2 | 51122-5112 |
| 11 | piston pin bushing | N/A | N/A |
| 12 | connecting rod c/w dipper | 2 | 51122-5120 |
| 13 | connecting rod bearing (pair) | N/A | N/A |
| 14 | cylinder | 2 | 52122-4101 |
| 15 | oil filler cap | 1 | 51111-4719 |
| 16 | cylinder to crankcase gasket | 2 | 51122-4103 |
| 17 | oil sight glass c/w gasket | 1 | 51111-4770 |
| 18 | crankcase | 1 | 51122-4701 |
| 19 | crankshaft | 1 | 51122-4601 |
| 20 | front bearing | 1 | 83501-6205 |
| 21 | rear bearing | 1 | 83501-6205 |
| 22 | crankcase to rear bearing housing gasket | 1 | 51122-4704 |
| 23 | rear bearing housing | 1 | 51122-4703 |
| 24 | oil seal | 1 | 51122-4708 |
| 25 | crankcase breather | 1 | 51111-4761 |
| 26 | flywheel c/w fasteners | 1 | 51122-6601 |
| 27 | front bearing housing | 1 | 51122-4706 |
| 28 | crankcase to front bearing housing gasket | 1 | 51122-4707 |
| 29 | connecting (interstage) tubing | 1 | 51122-7710 |
| Misc | 1/4" street elbow (oil drain) | 1 | STREL1/4 |
| | rear bearing snap ring | 1 | 83610-113025 |
| | interstage "Y" fitting | 1 | 51121-7710 |
| | interstage "elbow" fitting | 1 | 51112-7701 |
| | Eagle oil (590ml or 20oz) | 1 | EAOIL10 |



| | | | |
|----------|--|---|------------|
| A | intake filter element kit includes: - three(3) intake filter elements | 1 | 101000-300 |
| B | valve repair kit includes: -valve seat to head gasket (item 5) -two(2) outlet valve plates (item 6) -intake valve plate (item 7) -six(6) valve plate screws -valve seat to cylinder gasket (item 8) | 2 | 101000-165 |
| C | ring repair kit includes: -valve seat to head gasket (item 5) -valve seat to cylinder gasket (item 8) -two(2) compression rings -one(1) oil control ring -cylinder to crankcase gasket (item 16) | 2 | 101000-265 |
| D | Valve Plate Assembly (Not shown) | 2 | 52122-2100 |

| Description | Part No. | Qty |
|-----------------|--------------|-----|
| Unloader | 52122-0120 | 2 |
| Unloading Elbow | 69926-050101 | 1 |
| Unloading Tee | 69927-050101 | 1 |
| Unloading Tube | TU-1/4-CU | 3ft |
| Cylinder Head | 51121-0101U | 2 |

MODELS
PV02A

Supplied by:

Lynco
#8, 3600 - 21 Street N E
Calgary, Alberta
403-250-3600
sales@lynco.pro.com
www.lynco.pro.com